

**7.1.4 - Water conservation facilities available in the Institution**

1. Rain water harvesting
2. Borewell /Open well recharge
3. Construction of tanks and bunds
4. Waste water recycling
5. Maintenance of water bodies and distribution system in the campus

**Options:**

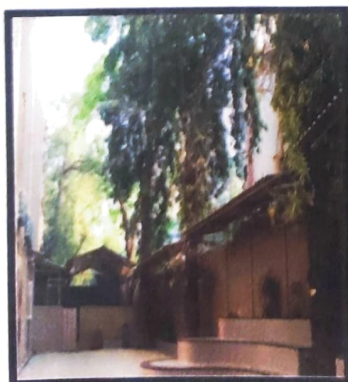
- A. Any 4 or all of the above
- B. Any 3 of the above
- C. Any 2 of the above
- D. Any 1 of the above
- E. None of the above

**Upload :**

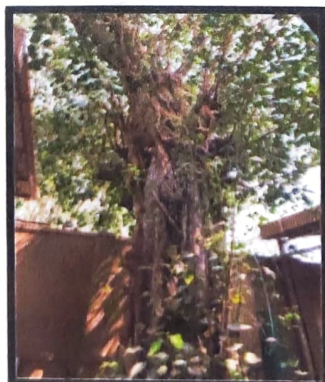
- **Geotagged photographs / videos of the facilities**
- **Any other relevant information**

7.1.4 - The conventional rainwater harvesting system requires space and so makes it difficult to set it up in the college premises. However, we have made provision for rain water to flow into the ground thereby preventing the wastage of rainwater. Our campus has rare and old trees (Kailashpati tree, Banyan tree and Peepal tree). Also there are small garden areas to support ground water recharge. We maintain the water supply received in the institution. Appropriate distribution is available in the toilets, food lab and pantry etc.

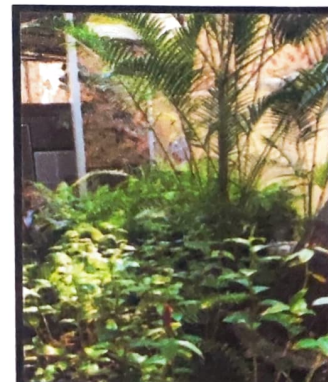
**Rare tree Kailashpati**



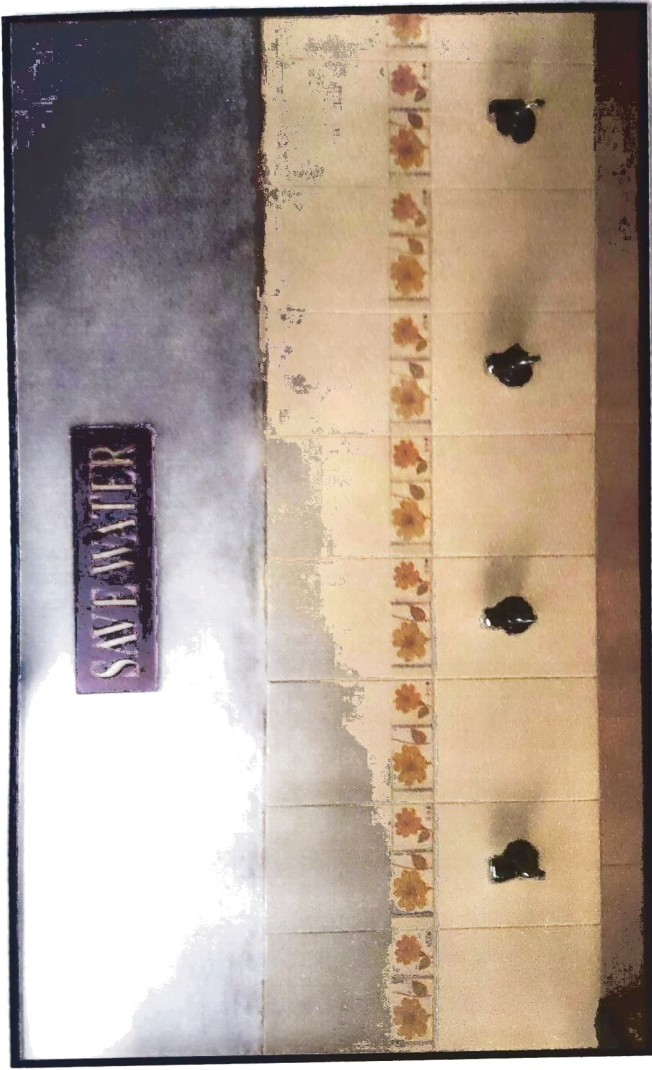
**Peepal Tree**



**Garden Area**



Awareness boards displayed in campus



714  
water conservation